

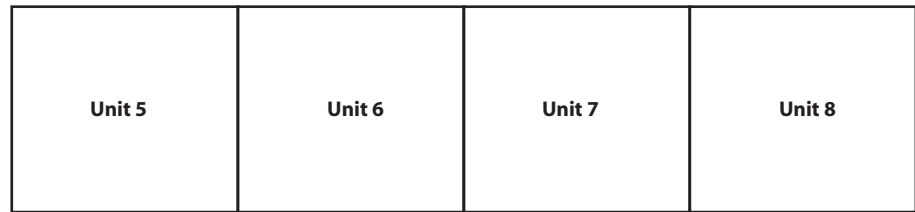


Map Legend			
—	Building Footprint	001	Parcel Number
—	Condo Unit	<b>Unit 1</b>	Parcel Lot Number

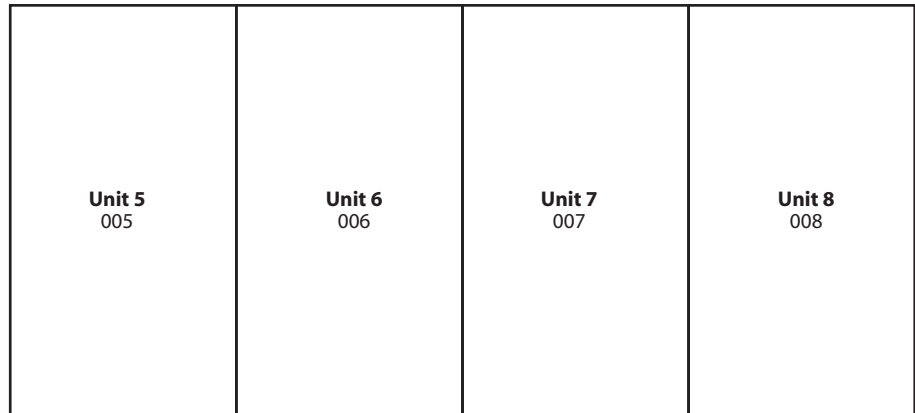
1319-30-537

DOUGLAS COUNTY  
Multi-Agency Geographic Information Center  
Not to Scale  
REVS'D: 05/01/02

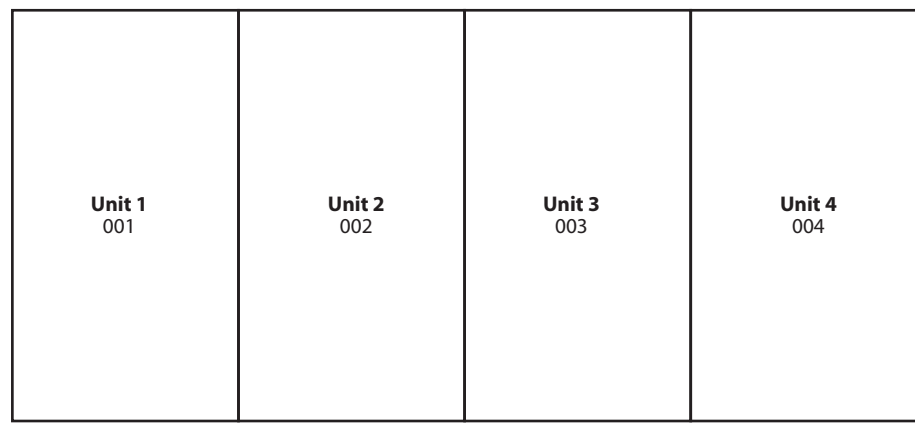
**CONDO DETAIL**



LEVEL 3



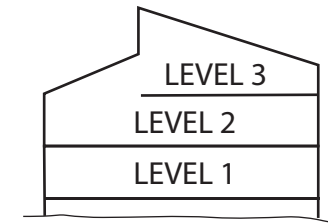
LEVEL 2



LEVEL 1

Lot 23  
Tahoe Village  
Unit 3  
342 GALAXY LN

For Condo Dimensions  
Refer to Record Map  
Book 879, Page 1952-Doc. 36008



NOTE: This map is prepared for the use of Douglas County Assessor, for assessment and illustrative purposes only. It does not represent survey of the premises. No liability is assumed as to the sufficiency or accuracy of the data delineated hereon.